

# ZOOM



## GENUINE AIR FILTER

LET YOUR ENGINE BREATHE

CASE IH MAKES THE DIFFERENCE.  
LET'S SEE HOW.

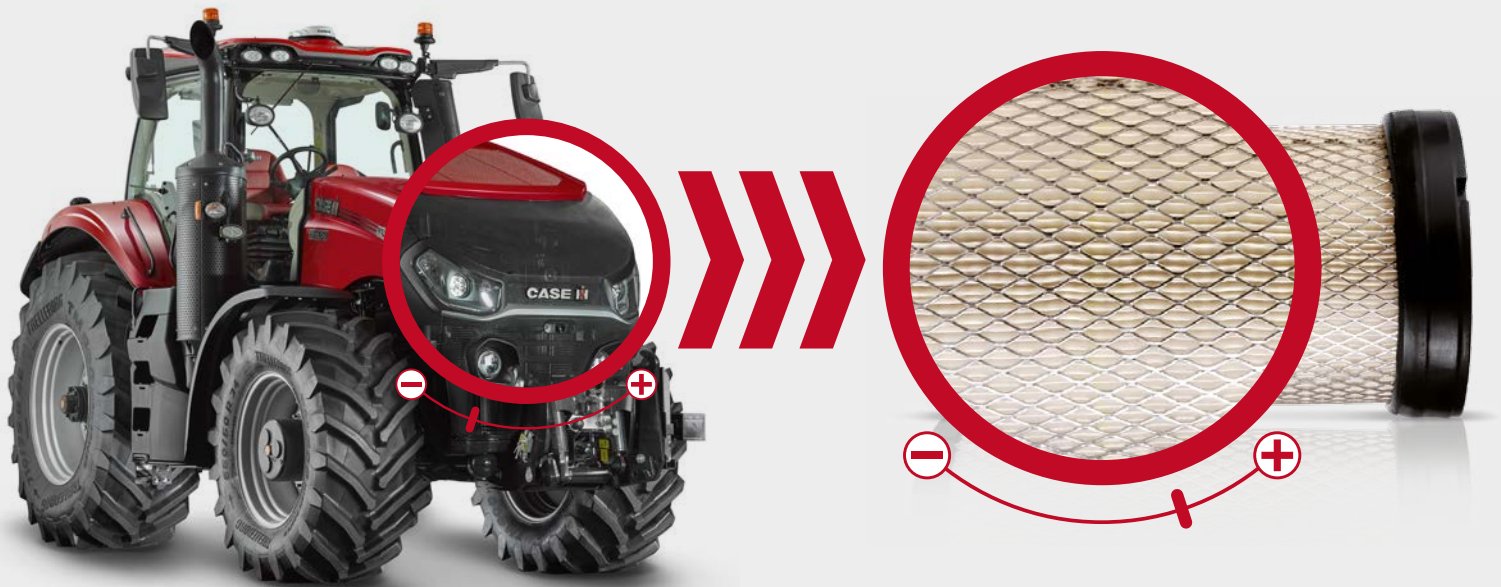


**GENUINEPARTS**  
HIGH PERFORMANCE

**CASE IH**

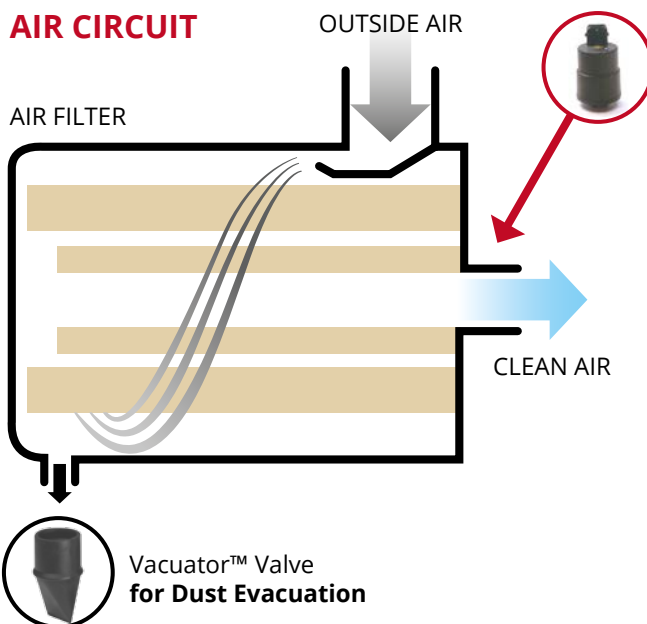
# The Key Role of the Air Filter.

The air filter plays a role in the combustion process. It allows the air to pass in sufficient quantity and take off impurities. The air filter protects the air intake from dust, dirt and other particles. Aspirated dust into the engine can cause early engine wear & huge failure. THE AIR FILTER IS THE LUNG OF YOUR MACHINE.



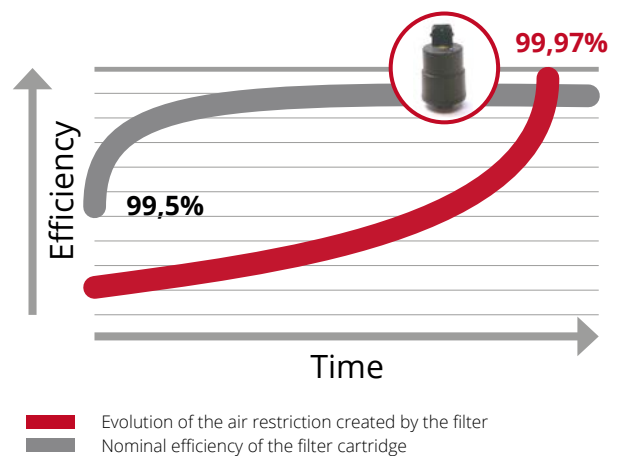
## HOW DOES AN AIR FILTER WORK?

### AIR CIRCUIT



### MAINTENANCE INDICATOR SWITCH = SECURITY

The visual warning indicates when the filter is clogged. A simple visual inspection of the cartridge would not allow to estimate if the filter is still in good condition. This warning helps to maximise the cartridge use while increasing the engine protection.

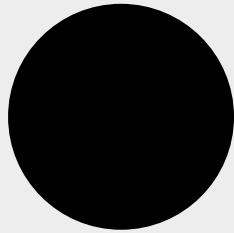


Only a CASE IH filter will maintain its original performances & will insure a perfect filtration over time.

# Why choose Genuine CASE IH air filter?

**ESSENTIAL PROPERTIES OF THE FILTER.** A CASE IH GENUINE FILTER OFFERS PROVEN SUPERIOR QUALITY.

Engine wear is influenced mostly by particles from **2 to 5 microns**. Offering optimal performance, the CASE IH filter **traps 99.8% of particles down to 1 micron size**.



**100  $\mu$  =**  
GRAIN OF SALT



**40  $\mu$  =**  
LIMIT OF VISIBILITY  
TO NAKED EYE



**10  $\mu$  =**  
TALCUM POWDER



**2  $\mu$  =**  
BACTERIA



**1  $\mu$  =**  
**CASE IH FILTER**

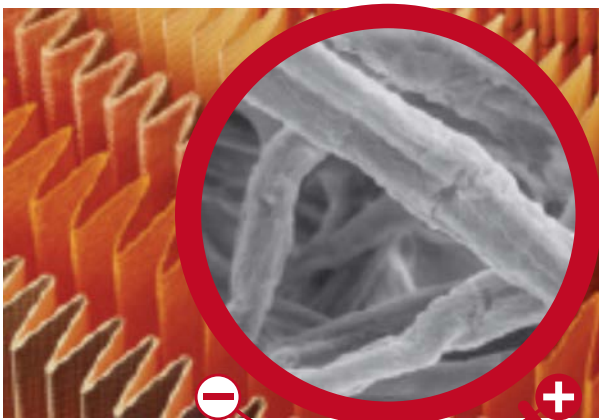
## THE MOST IMPORTANT IS INSIDE!

CASE IH criteria for media:

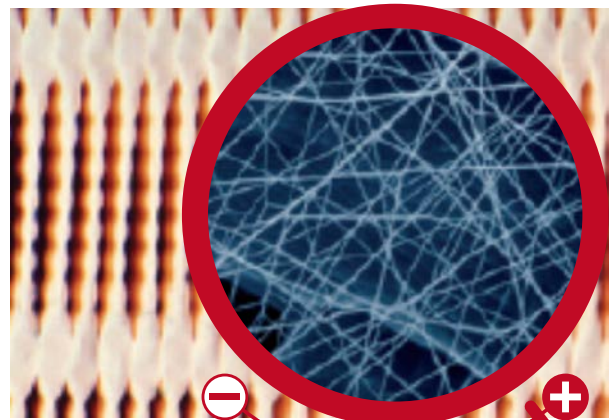
- HIGH EFFICIENCY
- LOW PRESSURE DROP
- HIGH CAPACITY DUST

Made with cellulose fibers or synthetics (the latest evolution technology with nanofibres), it is flame & humidity resistant. The filter element avoids a premature engine clogging. A **clogged filter** prevents air circulation **and increase fuel consumption**. Thanks to its optimum retaining capacity, the Genuine filter guarantees a longer life and optimises engine performance and durability between maintenance intervals.

### CELLULOSE FIBRE



### SYNTHETIC FIBRE

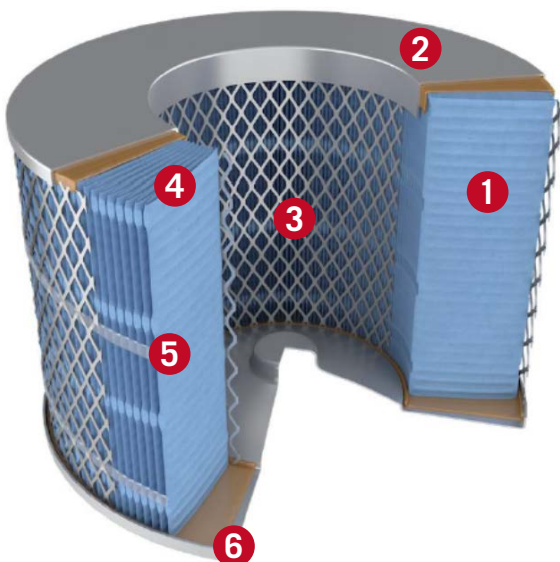




### THE QUALITY OF THE STRUCTURE.

**The filter is built with a metal grid and a gasket.** It has been specifically developed for CASE IH machines and is designed to perfectly fit the original housing. This ensures an easy maintenance and a perfect seal.

## AIR FILTER STRUCTURE



- 1 FILTER MEDIA**  
Increased efficiency of filtering media (99.96%).
- 2 END CAPS**  
Higher quality polyurethane material.  
Best design of the seal.
- 3 HEAVY DUTY LINERS**  
Reinforced structure for more media stability.
- 4 PLEATING**  
Regular pleats space for a greater dust capacity.
- 5 BEADING**  
Additional maintains for a better pleating holding.
- 6 PLASTISOL**  
Resistance and flexibility of the base (polyurethane).

DIFFERENCES MAY BE INVISIBLE BUT THEY ARE CRUCIAL.

**Do not take the risk to choose non genuine parts:** CASE IH offers a complete range of air filters specially designed to extend the life of your machine.

**The quality of the media matters!**

Thanks to its superior media technology, CASE IH air filters are more efficient than adaptable filters and capture more particles.



**Genuine  
CASE IH filter**

**3X  
MORE DUST  
HOLDING  
CAPACITY**

**EFFICIENCY: 99.9%  
CAPACITY: 220g**



**Adaptable  
filter**

**EFFICIENCY: 97%  
CAPACITY: 73g**

NOT ALL FILTERS ARE MADE TO CNH SPECIFICATIONS.



**Genuine  
CNH filter**



**Adhesives  
Urethane Gaskets  
Metal Liners  
Plastic Frames  
Paper / Cellulose / media**

**DIFFERENCES MAY  
NOT BE VISUAL**



**Adaptable  
filter**

**Materials not specified by CASE IH and poor quality control by non genuine parts suppliers can cause leaks!**

# Recommendations for use.

## SIGNS WHICH INDICATE THAT AIR FILTER SHOULD BEEN CHANGED:

### EXCESSIVE FUEL CONSUMPTION

A filter in poor condition will not be able to filter the air properly. As a result, the engine will receive less air than normal.

### ENGINE PERFORMANCE DECREASE

Reducing the amount of air entering the engine will impact negatively its effectiveness. In some cases, this may even cause a loss of power at acceleration.

### THE AIR FILTER APPEARS DIRTY

The best way to check the condition of your air filter is through a visual check. If it looks very dirty or blocked with small debris, it is strongly advised to replace it.

### MAINTENANCE INTERVALS

- 600 hours (or 1 year) for the Primary Filter
- 1200 hours (or 2 years) for the Secondary Filter

### USAGE PRECAUTIONS

Washing or blowing the filter may damage the paper or put dust/dirt on the clean air side.

### RESULTS

Dusted engine with engine degradation & **potential high extra costs** during the next maintenance.



**FOLLOW THESE TIPS. A GOOD MAINTENANCE IS KEY TO AVOID EXTRA COSTS!**



**At any time, easily and safely  
from the CASE IH web shop**



[www.mycnhstore.com](http://www.mycnhstore.com)



**caseih.com**